

NOMAD TOWER

LOVE YOUR WORKPLACE

PAUL GLICKMAN · 212.418.2646
Paul.Glickman@am.jll.com

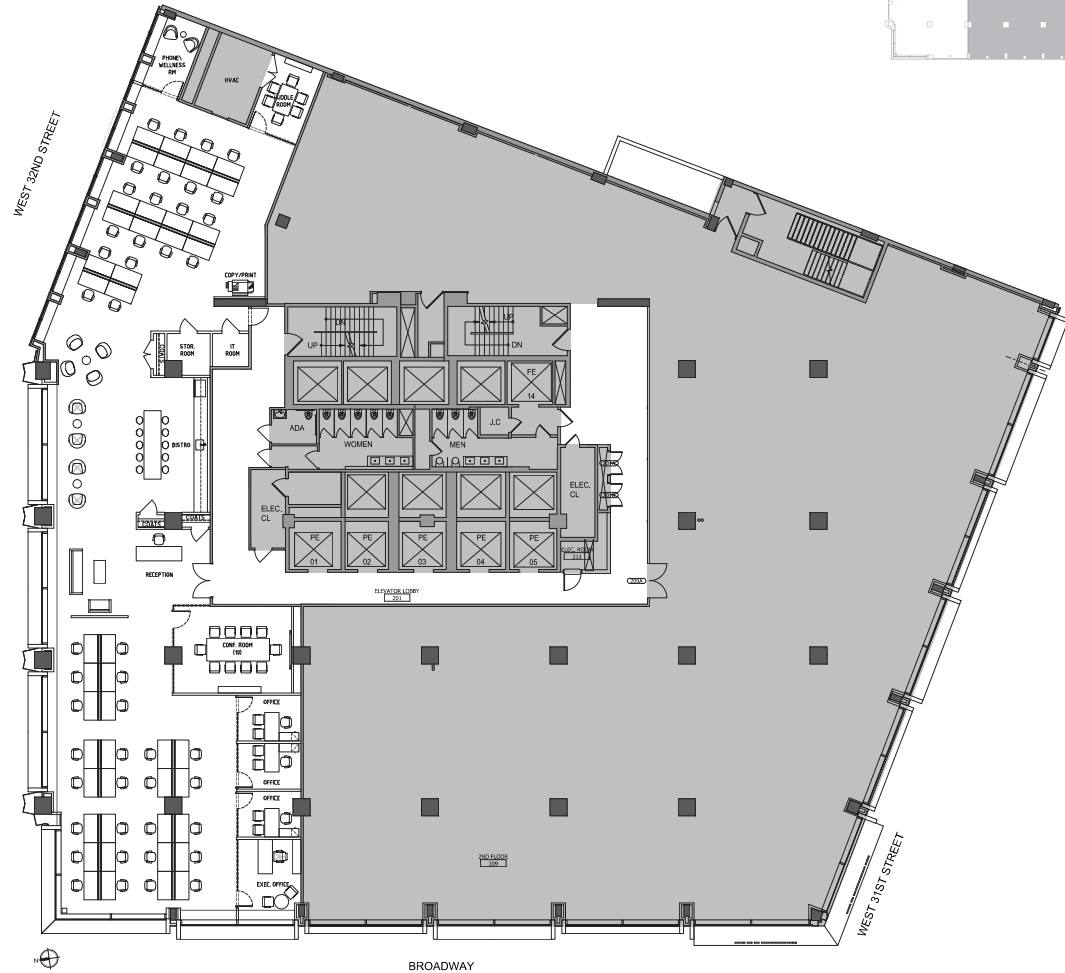
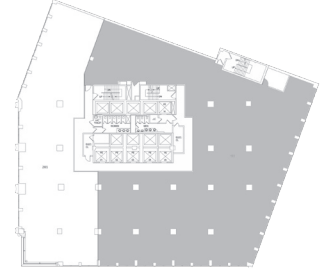
MITCHELL KONSKER · 212.812.5766
Mitchell.Konsker@am.jll.com

DIANA BIASOTTI · 212.812.5751
Diana.Biasotti@am.jll.com

BENJAMIN BASS · 212.812.6026
Benjamin.Bass@am.jll.com

KRISTEN MORGAN · 212.812.6043
kristen.morgan@am.jll.com

2nd Floor, Suite 201
9,270 RSF Available



LEGEND	
CONF. ROOM (1)	1
HUBBLE ROOM (1)	1
METRO	1
PHONE / WELLNESS ROOM	1
TR. ROOM	1
STORAGE ROOM	1
STORAGE CLOSET	1
SOAK CLOSET	2
COPY / PRINT	1

LEGEND - STAFF	
EXEC. OFFICE	1
OFFICE	3
OPEN WORK AREA + BENCH	40
RECEPTION	1
TOTAL	46

ALL OFFICE AND BENCHING ARE CONSIDERED TAKE-OR-PAY SURFACE. TO VERIFY FINISHING DETAILS, SEE ARCH. PLAN.

GH GLOBAL HOLDINGS
Management Group (US)



Nomad Tower, 1250 Broadway New York, NY 10001